



**Mr. GoodTower®**



EVAPCO is proud to offer the latest innovation in evaporative cooling technology; an air inlet louver that is both **Water** and **Sight Tight** which ensures water stays in and sunlight stays out! This louver is standard on all new induced draft EVAPCO products and available as retrofit for EVAPCO and competitors equipment already in service.

✓ **ELIMINATES SUNLIGHT**

In addition to eliminating splash-out, EVAPCO's WST air inlet louvers are "sight tight" eliminating sunlight exposure to basin water and inhibiting algae growth more effectively.

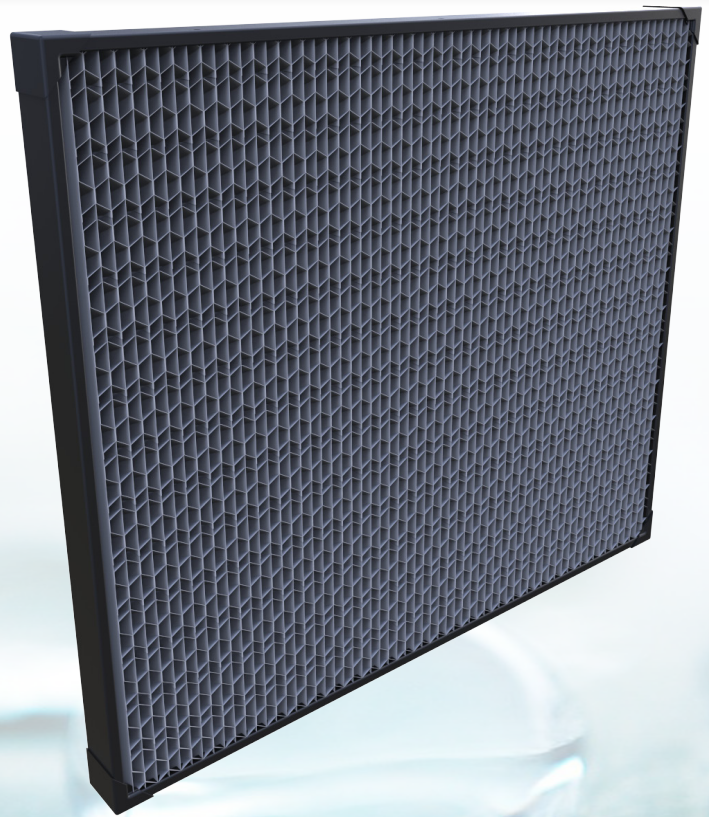
✓ **SUPERIOR PERFORMANCE**

Developed with Computational Fluid Dynamics (CFD) software EVAPCO's WST louver design has been proven through laboratory tests to maximise airflow while preventing water droplets from leaving the unit.

✓ **UPGRADE EXISTING EQUIPMENT**

Retrofit kits for EVAPCO, AQUACOOL, BAC AND MARLEY TEMCEL equipment are available with PVC or stainless steel frames. WST retrofits eliminate splash-out issues common

WST inlet louvers reinforce EVAPCO's continual commitment to improve and develop products that offer unique benefits and superior performance.



|                         |            |
|-------------------------|------------|
| Maximum Louver Width:   | 2440 mm    |
| Maximum Louver Height:  | 2440 mm    |
| Louver Material:        | PVC        |
| Frame Material:         | PVC or SST |
| Maximum Operating Temp: | 60°C       |

**WST  
INLET LOUVER**